

Pantera DP1500i

Surface Top Hammer Drills



TIER 4
FINAL

Sandvik Pantera DP1500i is intelligent, self-propelled, self-contained, crawler based surface drilling rig equipped with a cabin and a rod changer.

Sandvik Pantera DP1500i with practical intelligence fits perfectly for production drilling in large quarries or open pit mines and construction work sites. It suits well also for wall control and development works. To customize the rig it can be equipped with a variety of options to meet special requirements.

Hole Diameter:	89 - 152 mm (3 1/2" - 6")
Rock Tools:	51 and 60 mm (2" and 2 3/8") rods or 87 mm (3 1/2") tubes
Rock Drill:	33 kW
Engine Output:	287 kW (Tier 4 final)
Flushing Air:	14 m ³ /min, up to 10 bar (depends on used rock tools)
Production Capacity:	2,0 Mt/year
Total Weight	23 000 kg

HYDRAULIC ROCK DRILL

Rock drill type	HL 1560T
Drill rod diameters	51, 60 mm
Drill tube diameters	76, 87 mm
Operating pressure	90 - 230 bar
Percussion rate	35 - 40 Hz
Percussion output power	33 kW
Maximum rotation torque	2 050 Nm
Shank lubrication	Air / oil mist
Flushing	Air
Weight	470 kg

FEED

Feed type	LF 1514 HR with hose reel
Length of feed	9 154 mm
Rock drill travel	4 980 mm
Max. length of starter rod	(18')
Feed/pull out force	36 kN
Retaining centralizer	Pito 15H
Feed extension travel	1 480 mm
Feed swing	-56/+52° (-20/+94°)
Feed tilt	13-135°
Weight	1 500 kg

ROD CHANGER

Rod changer type	RC 1614
Storage capacity	7+1 (51 and 60 mm rods)
Storage capacity	6+1 (87 mm tubes)
Rod length	3 660, 4 270 mm
Max. hole length (51 mm)	33 m (7+1) x 14'
Weight without rods	550 kg

BOOM

Boom type	ZB 1550 H, telescopic
Boom extension	500 mm
Boom lift	+48/-6°
Boom swing	-2/+30°
Collaring height	+1.24 /-4.1 m
Horizontal holes	To the right hand side

CARRIER

Track type	FL 6
3 bar grouser plate width	400 mm
Ground pressure	1.1 kg/cm ²
Ground clearance	360 mm
Oscillation angles	+/- 11°
Tramming force	150 kN
Tramming speed	1.8/3.2 km/h

POWERPACK

Engine type	Caterpillar C 13 (TIER 4F)
Number of cylinders	6
Engine output	287 kW/1800 rpm
Transmission type	Gear box
Hydraulic pumps	Variable/gear
Screw compressor type	Enduro 25
Air flushing capacity	14 m ³ /min
Flushing air pressure	up to 10 bar (depends on used rock tools)
Air cleaner	2 pcs, dry type with ejector
Fuel tank	680 l
Fuel saving system	Standard
Weight	1 450 kg

HYDRAULIC SYSTEM

Filtration rate	12 micron abs.
Cooling capacity	up to +50°C ambient
Shank lubrication device	SLU 30-1 (26 l)
Hydraulic oil tank	390 l

CONTROL SYSTEM

Preset drilling parameters for different rock conditions	Adjustable for fine tuning
Antijamming system	For rotation and flushing
Control system diagnostics	Self diagnostic system
Voltage	24 VDC

DUST COLLECTOR

Dust collector type	DC 1550
Capacity / vacuum	35 m ³ /min at 1 200 mm vacuum H ₂ O
Filter elements / material	20 pcs / fiber
Total filter surface	16 m ²
Hydraulic motor output	16 kW
Primary cyclone	PE 80
Movable suction head	MS 250
Weight	290 kg

CABIN

Cabin type	Ergo cool
Certificates	F.O.P.S. and R.O.P.S.
Noise level in the cabin	80 dB (A)
Controls	Integrated into seat arm rests
Heaters	Standard
Pressurization	Standard
Seat	Multiposition
Vibration dampening	Standard
Windows	Safety laminated, tinted selective glass with wiper



STANDARD COMPONENTS

Rock drill	HL 1560T, hydraulic
Feed	LF 1514 HR with hose reel
Rod changer	RC 1614
Boom	ZB 1550 H, telescopic
Carrier	FL 6, oscillating
Powerpack	Diesel driven, hydraulic pumps and on board compressor
Hydraulic system	Electric load sensing
Cabin	Ergo cool
Dust collector	DC 1550, hydraulic
Working lights	15 pcs
Gauge set	For accumulator pressure checking
EN-safety devices: EN16228	
TIMi for vertical holes and hole depth measuring	
Movable drill steel support	
Suction shut down for water holes	
Flushing control automatics	
Manuals	1 x paper copy 1 x CD-ROM (ToolMan)

SELECTION OF OPTIONS

1.	Cooler bag in cabin
2.	Radio with CD-MP3 player
3.	Reversing camera
4.	Roller blinds for cabin windows
5.	Vacuum cleaner for cabin
6.	Automatic feed alignment for TIMi
7.	GPS aiming device for TIM and TIMi inclined holes
8.	TIM3D navigation system *)
9.	TIMi for inclined holes and hole depth measuring *)
10.	TIMi laser level based depth measuring *)
11.	Feed support for soft ground
12.	Horizontal drilling kit
13.	Kit for alternative steels, each
14.	LF 1522 feed with hose reel (max starter rod 20 ft)
15.	Rollers for rod changer
16.	Thread greasing
17.	Thread greasing with 5 gallon bucket
18.	Tube drilling kit
19.	One hole automatic drilling down to preset depth
20.	Power extractor
21.	Readiness for Power Extractor
22.	RD1635CF and CSL System *)
23.	Anti- freeze system for air lines
24.	Biodegradable hydraulic oil
25.	Central lubrication system Sandvik
26.	Electric fuel filling pump
27.	Electric water filling pump
28.	Fast fill connection for engine coolant, hydraulic and engine

THE JAWS FOR DRILL STEELS

Drill steel type	Drill steel diameter	Recommended hole diameter
Extension rods / MF rods	51 mm 2"	89 - 127 mm 3 ½" - 5"
MF-rods	60 mm 2 ¾"	102 - 140 mm 4" - 5 ½"
Pilot tube	76 mm 3"	89 - 127 mm 3 ½" - 5"
Pilot tube	87 mm 3 ½"	102 - 140 mm 4" - 5 ½"
Tubes	87 mm 3 ½"	102 - 152 mm 4" - 6"

ADJUSTMENT INFORMATION FOR DELIVERY

Rotation motor selection

Rotation motor OMT 400
for 89 - 127 mm, 3 ½" - 5" holes

Rotation motor OMT 500
for 127 - 152 mm, 5" - 6" holes

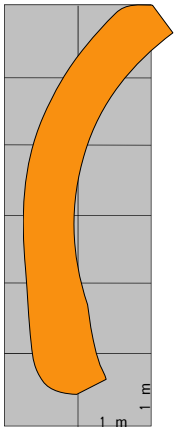
Extension rod lengths

3 660 mm	12'
4 270 mm	14'

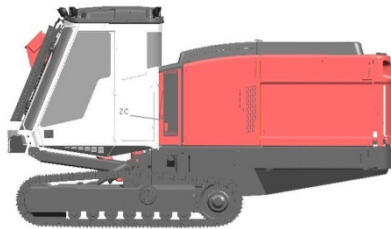
29.	Fast fill connection for fuel and water tanks
30.	Fire suppression system Sandvik, automatic
31.	Guides for grousers
32.	Hydraulic rear ground support
33.	Hydraulic winch with radio remote and cable tightness automatics
34.	Single bar grouser plates
35.	Towing hook
36.	Xenon lights, 9 pcs
37.	Ether starting aid for engine without ether bottle
38.	Fuel powered heater for engine and cabin
39.	Fuel powered heater for engine, cabin and water tank
40.	Readiness for fuel powered heater
41.	Dustmizer requires flap feeder (engine heater option needed)
42.	Flap feeder for dust collector
43.	Sampling device
44.	Water injection system
45.	Grinder Sandvik RG420H
46.	Extra manuals
47.	First service kit for DP1500i
48.	Special tools for HL 1560 T, field kit
49.	Special tools for HL 1560 T, complete
50.	Security+
51.	Sanremo

*) replaces standard component

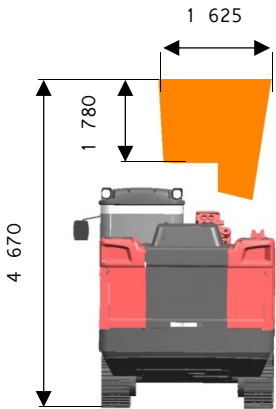
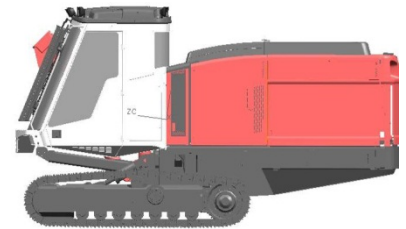
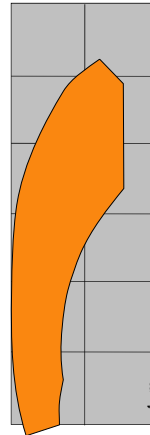
COVERAGE AREA



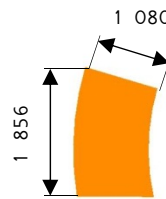
Coverage area
horizontal drilling, sideways



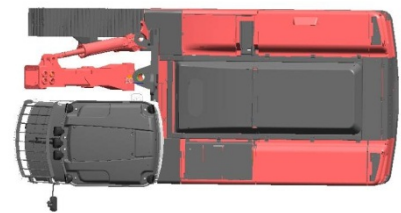
Coverage area
vertical drilling



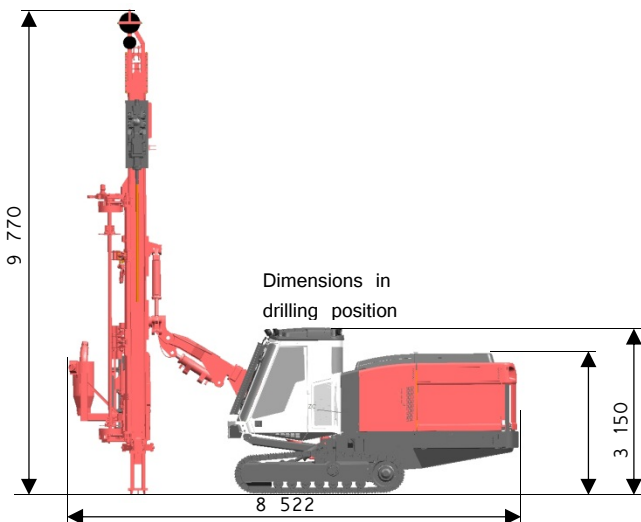
Coverage area
horizontal drilling, forwards



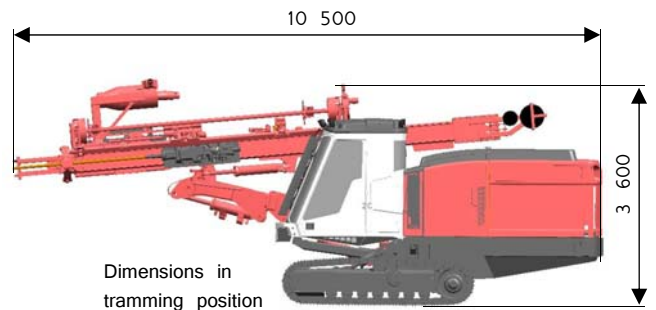
Coverage area
vertical drilling



TRAMMING AND TRANSPORT DIMENSIS



Dimensions in
drilling position



Dimensions in
tramping position

Weight	23 000 kg
Width	2.5 m
Height	3.2 m
Total length	11.5 m

Sandvik Mining and Construction reserves the right to change this specification without further notice.

Sandvik Mining and Construction Oy
 P.O.Box 100, FIN-33311 Tampere, Finland
 Tel. +358 205 44 121, Telefax +358 205 44 120
www.sandvik.com

