



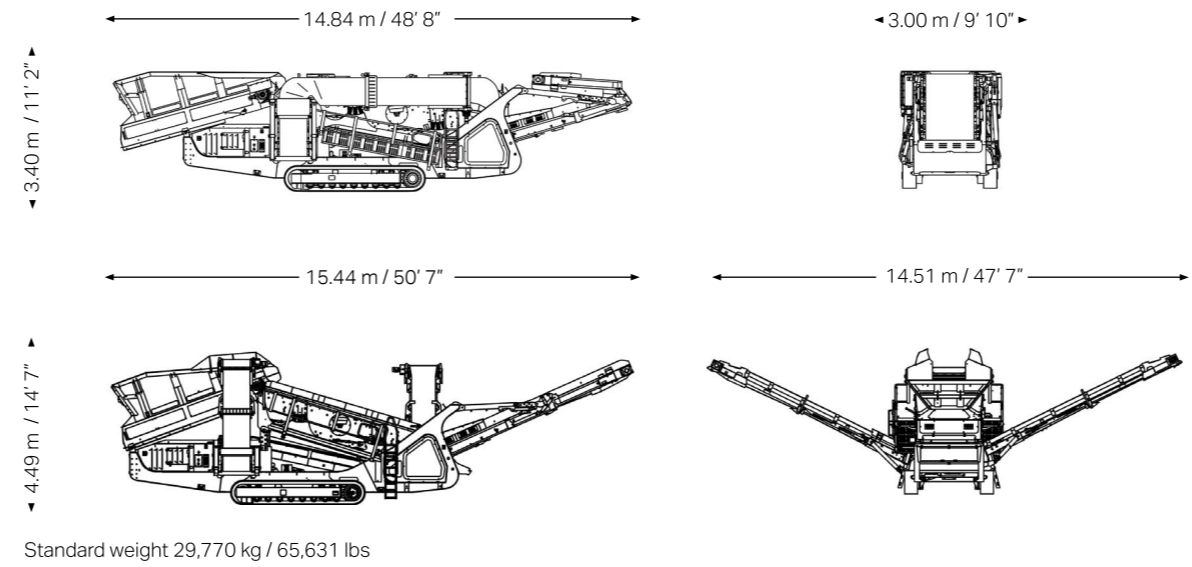
# QE341 SCALPER ENGINEERING IN MOTION

## TECHNICAL SPECIFICATIONS

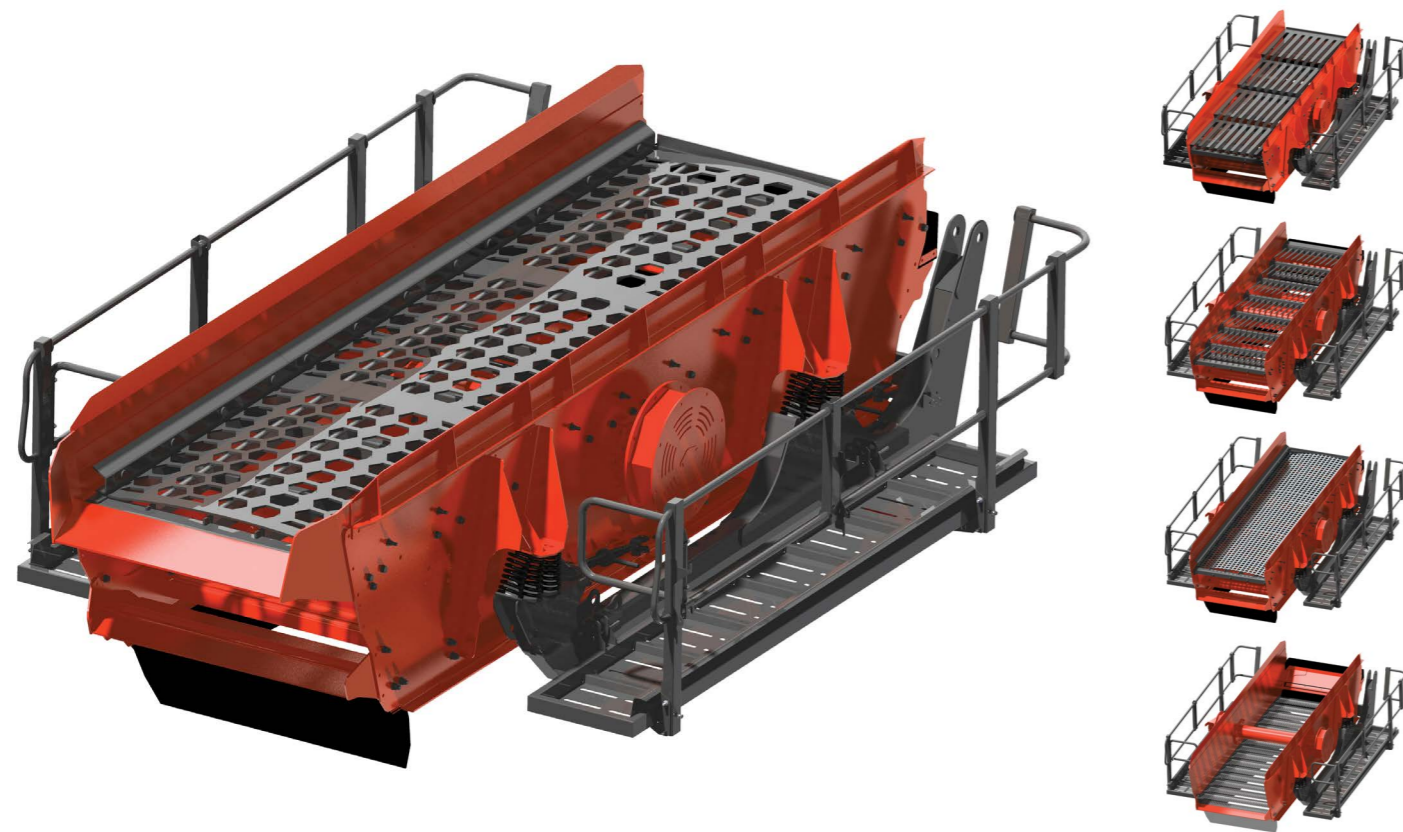
KEY SPECIFICATIONS	DATA
Screen box	
Type	2 Bearing Heavy Duty, 2 Deck
Top deck	4700 mm x 1446 mm / 15' 5" x 4' 9"
Bottom deck	4200 mm x 1426 mm / 13' 9" x 4' 8"
Variable screen angle	11° - 17°
Feeder	Steel Apron
Conveyor belt width	
Oversize	1400 mm / 55"
Side (midsize)	800 mm / 32"
Side (fines)	800 mm / 32"

KEY SPECIFICATIONS	DATA
Conveyor discharge height	
Oversize	4000 mm / 13' 1"
Side (midsize)	4059 mm / 13' 4"
Side (fines)	4238 mm / 13' 11"
Power pack	
Engine type	CAT C4.4 74.5 kW / 100 hp or CAT C4.4 83 kW / 111 hp
Diesel tank size	230 litres / 61 USG
Hydraulic tank size	460 litres / 122 USG

Note. All weights and dimensions are for standard units only



Ability to configure with punch plate, grizzly fingers, bofar bars, mesh or cascade fingers



BS-329 ENG rev3 © Sandvik Construction 2016 SANDVIK is a registered trademark owned by Sandvik Intellectual Property AB in Sweden and other countries



# QE341 SCALPER ENGINEERING IN MOTION

KEY SPECIFICATIONS	DATA
Screen type	2 Bearing Heavy Duty, 2 Deck
Screen box size	16' x 5' / 4.7 x 1.45 m
Engine	C4.4 74.5 kW / 100 hp
Transport dimensions	14.84 m / 48' 8" (l) 3.00 m / 9' 10" (w) 3.40 m / 11' 2" (h)
Weight	29,770 kg / 65,631 lbs

## HEAVY DUTY SCALPING

The QE341 represents the latest generation heavy duty, tracked mobile scalping screen.

Based on a sturdy crusher-type chassis, the QE341 features a hydraulically operated heavy duty hopper and double plated apron feeder. The adjustable heavy duty screenbox with high speed and aggressive throw, combined with an extra-wide oversize conveyor to ensure free flow of material, guarantee high productivity.

With a wide choice of screen media available, the QE341 can be configured to match specific customer requirements and is able to cope with a huge range of different, and difficult, materials and applications such as construction waste, landfill mining, quarry overburden, mine dumps, and scalping before a crusher or screening aggregates after a crusher.

## STANDARD FEATURES INCLUDE:

- Heavy duty screen box with uniquely high throw and aggressive action
- Massive stockpiling capability through integrated hydraulic conveyors
- Hydraulic folding maintenance platforms for ease of maintenance
- Compatible for 2-way or 3-way split configurations
- Hydraulic oil cooler fitted as standard
- Fully compliant with all current safety regulations
- Designed for efficient fuel economy and low operating costs

- ① **Feed hopper**
- Large volume wear resistant feed hopper
  - One-piece hopper design for quick set-up time
  - Optional hopper extensions available
  - Split rear hopper door which can be lowered for direct feeding with crusher
  - Heavy duty apron chain feeder fitted as standard

- ② **Screen box**
- Heavy duty 16' x 5' / 4.7 x 1.45 m screen box with uniquely high throw and aggressive action ensures maximum productivity
  - Screen box can be raised for bottom deck change enabling ease of maintenance
  - Hydraulically folding maintenance platforms for ease of access for maintenance

- ③ **Mid size conveyor**
- Discharge height 4059 mm / 13' 4" enabling massive stockpiling capacity
  - 800 mm / 32" wide belt
  - Hydraulically angle adjustable

- ④ **Oversize conveyor**
- Discharge height 4000 mm / 13' 1" enabling massive stockpiling capacity
  - 1400 mm / 55" wide belt to optimise material flow and increase capacity
  - Hydraulically angle adjustable

- ⑨ **Fines conveyor**
- Discharge height 4238 mm / 13' 11" enabling massive stockpiling capacity
  - 800 mm / 32" wide belt
  - Hydraulically angle adjustable

- ⑧ **Power pack**
- Emissions compliant 74.5 kW / 100 hp engine
  - Easy access for service and maintenance
  - Steel diesel tank with twin filler enables filling from either side of the machine

- ⑦ **Control system**
- User friendly colour coded control panel
  - One-touch sequential auto Start/Stop facility for easy operation
  - Hydraulic oil cooler fitted as standard
  - Temperature controlled for more efficient use of power

- ⑥ **Tracks**
- 400 mm / 16" wide two speed tracks driven by radio or umbilical control
  - Radio remote control tracking fitted as standard

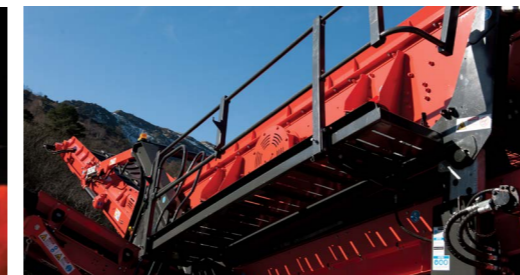
- ⑤ **Chassis**
- Robust crusher-style chassis
  - Large clearance from oversize belt to chassis for oversize material
  - Compatible for 2 way and 3 way split configurations
  - Ergonomically designed incline ladders for easy and safe access onto walkways
  - Optional jacking legs



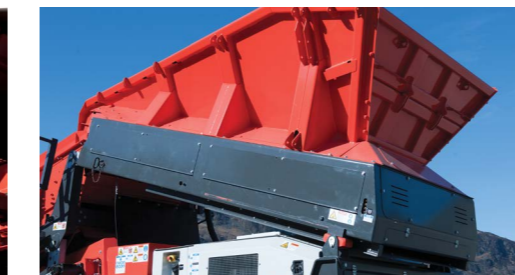
## STANDARD FEATURES



Colour coded control panel for ease of operation



Hydraulically folding maintenance platforms



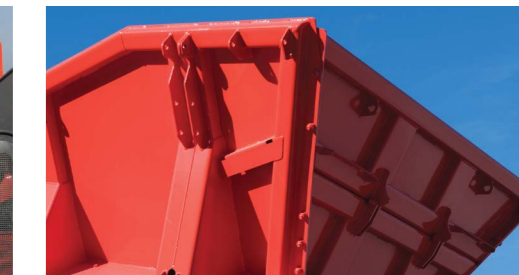
One piece hopper for quick and easy set-up



Remote control for ease of mobility



Screen box jack up facility allows easy access



Split rear hopper door for direct feeding