

# NEMUS 3000

Universal drum screen



# Universal drum screen with hydraulic or electric drive

Screening is a key process step in modern material flow management. Komptech fulfills this requirement with its many years of experience in screening machine construction. The new **Nemus 3000** combines the proven strengths of its predecessors with innovative solutions for greater convenience and efficiency.

Whether hydraulic or electric drive (E version), as a trailer or self-propelled on tracks, with fine particle discharge on the left or right – the Nemus **meets virtually all customer requirements**. Details such as the hydraulically foldable side wall, the extendable drive unit, and the easy replacement of the hopper belt and collection belt ensure maximum ease of maintenance.



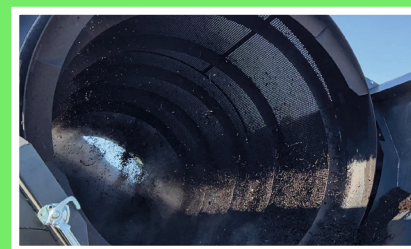
## 01 | Engine

- Powerful Perkins diesel engine with the latest emission standards
- Fully encapsulated engine compartment for noise reduction
- Nemus 3000 E: Optional diesel generator and grid connection



## 02 | Hopper

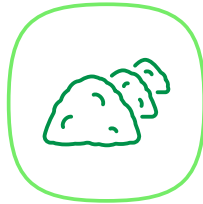
- 4 m loading length and more than 5 m³ capacity
- Drum-side hopper belt drive for better power transfer
- Automatic straight-run control for conveyor belt



## 03 | Screen drum and drive

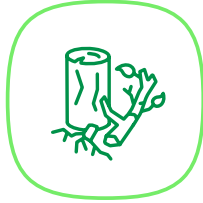
- Quiet-running, low-wear Drumgrip drum drive
- Complete drum change can be done without tools
- Nemus 620: Designed for drums from competitors

# Wide range of applications



## Compost

Adjustable hopper and drum speeds enable precise adaptation to the compost, and the **load-dependent hopper control** prevents overfilling of the drum.



## Biomass, bark, chips, waste wood

**Steep hopper walls** prevent bridging, and a conveyor with nubs moves the feedstock to the drum dependably. A discharge height of up to 3.5 metres permits high material cones.



## Excavated earth, sand, gravel, light C&D waste

Heavy materials aren't a problem; a hopper pre-screen keeps massive contraries out. The **hopper belt control** prevents belt tilting, and screen drums with walls up to 10 millimetres thick give long service.



## Waste (preshredded)

Enough room between the drum and sidewall ensures stoppage-free operation even with larger screen holes as is often the case with waste screening. The **foldable side wall** also provides easy access for cleaning.



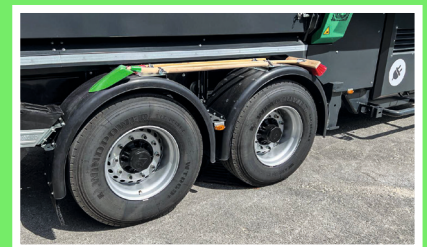
## 04 | Discharge system

- Inclination of discharge conveyors flexibly adjustable
- Fine fraction discharge possible on the left or right
- Wind sifter as option for coarse fraction discharge conveyor



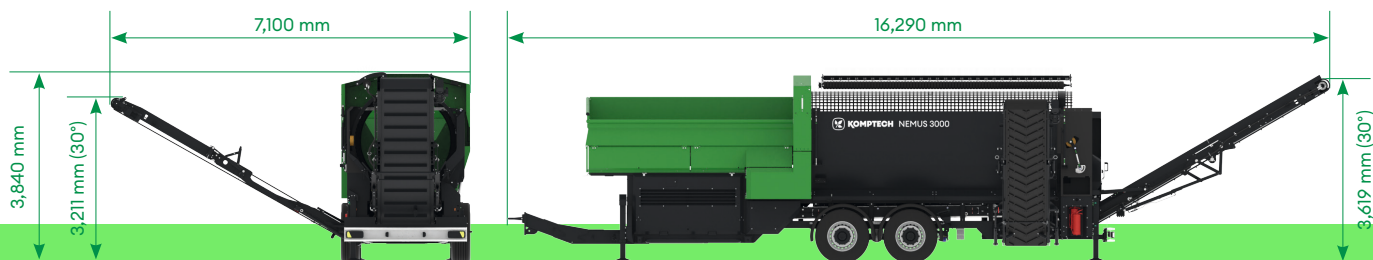
## 05 | Control

- User-friendly control panel with 5.7-inch color display
- Ideal positioning of all elements prevents incorrect operation
- Radio remote control with display as an option



## 06 | Frame & chassis

- Practical detail: cleaning tools mounted on the mudguards
- Sturdy chassis with robust support legs for secure position
- Mobility variants: Trailer, Semi-trailer and Track



# 55

Engine power (kW)

# 5

Hopper volume (m<sup>3</sup>)

# 30

Screening area (m<sup>2</sup>)

# 170

Throughput (m<sup>3</sup>/h)

### Drive

System..... diesel-hydraulic / diesel-electric / electric

Power (kW/HP)..... 55/75

### Material feeding

Hopper volume (m<sup>3</sup>)..... 5

Feeding length (mm)..... 4,100

Feeding width (mm)..... 1,674

Feeding height (mm)..... 2,808

### Material discharge (Trailer)

Max. discharge height coarse fraction (mm)..... 3,619

Max. discharge height fine fraction (mm)..... 3,211

### Weight (depending on features)

Trailer (t)..... 19

Track (t)..... 22

### Screening drum

Screening area (m<sup>2</sup>)..... 30

Length (mm)..... 5,500

Screening drum diameter (mm)..... 2,000

Max. drum rpm..... 23

Drum drive..... Drumgrip or chainwheel

### Throughput (depending on material)

Throughput (m<sup>3</sup>/h)..... up to 170

### Dimensions transport position (L x W x H)

Trailer (mm)..... 12,000 x 2,550 x 4,000

Track (mm)..... 10,516 x 2,950 x 3,500

### Dimensions working position (L x W x H)

Trailer (mm)..... 16,290 x 7,100 x 3,840

Track (mm)..... 14,737 x 7,300 x 3,840

