



# Cat<sup>®</sup> 918M

## COMPACT WHEEL LOADER

### FEATURES:

- **Cat<sup>®</sup> Optimized Z-bar Loader Linkage** – The Cat Optimized Z-bar Loader linkage combines the digging efficiency of a traditional Z-bar with tool carrier capabilities for great performance and versatility. With parallel lift and high tilt forces throughout the working range you can safely and confidently handle loads with precise control.
- **Work Tools** – The 918M features the Cat exclusive, Performance Series Buckets, as well as high visibility pallet forks. These tools enhance productivity and are available with either an Integrated Toolcarrier (IT) or ISO (wide) coupler style. Legacy coupler tools such as brooms, grapple buckets, multi-purpose buckets and other work tools remain compatible.
- **Hydraulics and Controls** – State of the art electro-hydraulic system provides low effort, fine control with fast cycle times. All-in-one joystick helps keep eyes on the work. Operator can adjust machine responsiveness with the push of a button, which allows the operator to set up the machine exactly the way they want it based on the application. High Flow option allows for the use of even the most demanding work tools.
- **Tuned Drivetrain** – Smooth shifting and powerful acceleration is matched with modulated hydrostatic braking in the inching/braking pedal, creating a rhythm for material moving. Creeper and electronic engine speed control makes broom and snow blower work easy. Operator tunes between smooth or aggressive shifting with the push of a button.
- **Cab** – All around visibility is further enhanced with the availability of a rearview camera. The deluxe cab ensures operator comfort with a heated, air suspension seat and easy to use controls. Available features such as Implement and Hystat Aggressiveness, Ride Control, Lift and Tilt Kickouts, Engine Speed Control and Rimpull Control allow the operator to customize the machine via a soft touch keypad.
- **Serviceability** – Extended service intervals and excellent service access make daily checks quick and easy allowing you to get to work sooner.
- **Efficiently Powerful** with its high full turn tipping loads, powerful breakout forces and increased engine power the M Series delivers a balanced solution for all customer applications.
- **Standard Fuel Savings Features** such as Eco Mode, On Demand Cooling Fan, and Auto Engine Idle Shutdown make the 918M both powerful and fuel efficient.

## Specifications

### Engine

Engine Model	Cat C4.4 ACERT™	
Maximum Gross Power:		
Maximum Engine Speed	2,350 RPM	
SAE J1995	87 kW	117 hp
ISO 14396	86 kW	115 hp
ISO 14396 (DIN)	86 kW	117 hp
Rated Net Power:		
Rated Engine Speed	2,200 RPM	
SAE J1349	83 kW	112 hp
ISO 9249	84 kW	113 hp
ISO 9249 (DIN)	84 kW	114 hp
Displacement	4.4 L	268 in <sup>3</sup>
Bore	105 mm	4.13 in
Stroke	127 mm	5.00 in

### Engine (continued)

Maximum Gross Torque:		
SAE J1995	504 N-m	372 lbf-ft
ISO 14396	500 N-m	369 lbf-ft
Maximum Net Torque:		
SAE J1349	490 N-m	361 lbf-ft
ISO 9249	495 N-m	365 lbf-ft

- Engine meets U.S. EPA Tier 4 Final/EU Stage IV emission standards.
- Net power advertised is the power available at the flywheel plus front drive implement pump when the engine is equipped with fan, air cleaner, muffler and alternator.



# 918M Compact Wheel Loader

## Buckets

Bucket Capacities – General Purpose	1.3-1.9 m <sup>3</sup>	1.7-2.5 yd <sup>3</sup>
-------------------------------------	------------------------	-------------------------

## Steering

Steering Articulation Angle (each direction)	40 degrees	
Maximum Flow – Steering Pump	82 L/min	21.7 gal/min
Maximum Working Pressure – Steering Pump	22 000 kPa	3,190 psi
Steering Cycle Times (full left to full right):		
At 2,350 RPM: 90 RPM steering wheel speed	2.3 seconds	
Number of Steering Wheel Turns – full left to full right or full right to full left	3.4 turns	

## Loader Hydraulic System

Maximum Flow – Implement Pump	165 L/min	43.6 gal/min
3rd Function, Maximum Flow, Standard	95 L/min	25 gal/min
3rd Function, Maximum Flow, High	150 L/min	40 gal/min
4rd Function, Maximum Flow	95 L/min	25 gal/min
Maximum Working Pressure – Implement Pump	28 000 kPa	4,061 psi
Relief Pressure – Tilt Cylinder	32 000 kPa	4,641 psi
3rd Function Relief Pressure	32 000 kPa	4,641 psi
4th Function Relief Pressure	32 000 kPa	4,641 psi

### Hydraulic Cycle Times:

Raise (ground level to maximum lift)	4.8 seconds	
Dump (at maximum reach)	1.8 seconds	
Rack Back	2.2 seconds	
Float Down (maximum lift to ground level)	2.7 seconds	
Total Cycle Time	11.5 seconds	

Note: All cycle times listed are with cylinder snubbing turned off.

## Service Refill Capacities

Fuel Tank	154.0 L	40.7 gal
Cooling System	21.5 L	5.7 gal
Engine Crankcase	8.8 L	2.3 gal
Axles:		
Front	17 L	4.5 gal
Rear	17 L	4.5 gal
Hydraulic System (including tank)	98.0 L	25.9 gal
Hydraulic Tank	55.0 L	14.5 gal
Transmission	3.4 L	0.9 gal
Diesel Exhaust Fluid (DEF) Tank	18.9 L	5.0 gal

- DEF used in Cat SCR systems must meet the requirements outlined in the International Organization for Standardization (ISO) standard 22241-1.

## Transmission

Forward and Reverse:		
Low Range, Speed Range 1*	10 km/h	6.3 mph
Low Range, Speed Range 2	20 km/h	12.5 mph
High Range	40 km/h	25 mph

\*Creeper Control allows speed control from a stand still up to 10 km/h (6.3 mph). The Creeper Control will only work in Range 1.

## Tires

Standard Size	17.5-25 12PR
Other Choices Include:	17.5-25 12PR L2
	17.5-R25 XHA * L3
	17.5-R25 * L2/L3 PC RM
	17.5-25 16PR L3, 3PC Rim
	17.5-25 GY L2/L3
	17.5-25 12PR L2, SNOW Flexport™

- Other tire choices are available. Contact your Cat dealer for details.
- In certain applications, the loader's productive capabilities may exceed the tire's tonnes-km/h (ton-mph) capabilities.
- Caterpillar recommends that you consult a tire supplier to evaluate all conditions before selecting a tire model.

## Cab

ROPS	SAE J1040 MAY94, ISO 3471-1994
FOPS	SAE J/ISO 3449 APR98, Level II, ISO 3449 1992 Level II

- Cab and Rollover Protective Structures (ROPS) are standard in North America and Europe.
- The declared dynamic operator sound pressure levels per ISO 6396:2008\*, when properly installed and maintained, is 77 dB(A).
- The labelled sound power level for the CE marked configurations when measured according to the test procedure and conditions specified in 2000/14/EC is 103 dB(A).

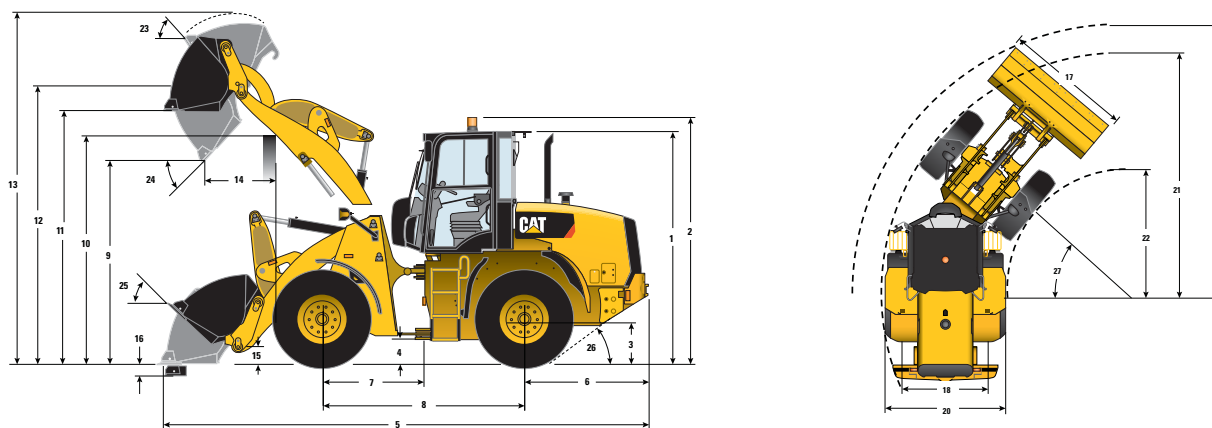
\*The measurements were conducted with the cab doors and windows closed.

## Axles

Front	Fixed
	Locking differential (standard)
Rear	Oscillating ±11 degrees
	Locking differential (standard)

# 918M Compact Wheel Loader

## Dimensions and Operating Specifications (All dimensions are approximate. Dimensions vary with bucket and tire choice.)



	Standard Lift – IT		Standard Lift – ISO		Standard Lift – PO	
*Vary with bucket. **Vary with tire.						
** 1 Height: Ground to Cab	3110 mm	10'2"	3110 mm	10'2"	3110 mm	10'2"
** 2 Height: Ground to Beacon	3300 mm	10'9"	3300 mm	10'9"	3300 mm	10'9"
** 3 Height: Ground Axle Center	640 mm	2'1"	640 mm	2'1"	640 mm	2'1"
** 4 Height: Ground Clearance	438 mm	1'5"	438 mm	1'5"	438 mm	1'5"
* 5 Length: Overall	6652 mm	21'9"	6708 mm	22'0"	6583 mm	21'7"
6 Length: Rear Axle to Bumper	1615 mm	5'3"	1615 mm	5'3"	1615 mm	5'3"
7 Length: Hitch to Front Axle	1350 mm	4'5"	1350 mm	4'5"	1350 mm	4'5"
8 Length: Wheel Base	2700 mm	8'10"	2700 mm	8'10"	2700 mm	8'10"
* 9 Clearance: Bucket at 45 degrees	2838 mm	9'3"	2800 mm	9'2"	2882 mm	9'5"
** 10 Clearance: Load over Height	3381 mm	11'1"	3381 mm	11'1"	3381 mm	11'1"
** 11 Clearance: Level Bucket	3562 mm	11'8"	3562 mm	11'8"	3563 mm	11'8"
** 12 Height: Bucket Pin	3818 mm	12'6"	3818 mm	12'6"	3818 mm	12'6"
** 13 Height: Overall	4847 mm	15'10"	4882 mm	16'0"	4825 mm	15'9"
* 14 Reach: Bucket at 45 degrees	933 mm	3'0"	974 mm	3'2"	881 mm	2'10"
15 Carry Height: Bucket Pin	353 mm	1'1"	345 mm	1'1"	353 mm	1'1"
** 16 Dig Depth	61 mm	2.4"	61 mm	2.4"	60 mm	2.3"
17 Width: Bucket	2401 mm	7'10"	2401 mm	7'10"	2401 mm	7'10"
18 Width: Tread Center	1800 mm	5'10"	1800 mm	5'10"	1800 mm	5'10"
19 Turning Radius: Over Bucket	5410 mm	17'8"	5425 mm	17'9"	5390 mm	17'8"
20 Width: Over Tires	2259 mm	7'4"	2259 mm	7'4"	2259 mm	7'4"
21 Turning Radius: Outside of Tires	4877 mm	16'0"	4877 mm	16'0"	4877 mm	16'0"
22 Turning Radius: Inside of Tires	2563 mm	8'5"	2563 mm	8'5"	2563 mm	8'5"
23 Rack Angle at Full Lift	55 degrees		55 degrees		55 degrees	
24 Dump Angle at Full Lift	47 degrees		47 degrees		47 degrees	
25 Rack Angle at Carry	44 degrees		44 degrees		44 degrees	
26 Departure Angle	33 degrees		33 degrees		33 degrees	
27 Articulation Angle	40 degrees		40 degrees		40 degrees	
*Tipping Load – Straight (ISO 14397-1)	6903 kg	15,219 lb	6740 kg	14,859 lb	7272 kg	16,032 lb
*Tipping Load – Full Turn (ISO 14397-1)	5825 kg	12,837 lb	5681 kg	12,524 lb	6157 kg	13,574 lb
*Breakout Force	8480 kg	18,695 lb	7933 kg	17,489 lb	9113 kg	20,091 lb
*Operating Weight	9469 kg	20,876 lb	9491 kg	20,924 lb	9282 kg	20,463 lb

Dimensions listed are for a machine configured with general purpose bucket, bolt-on cutting edges, 80 kg (176 lb) operator, and 17.5 R25 (L2) tires.

# 918M Compact Wheel Loader

## STANDARD EQUIPMENT

### POWER TRAIN

- Cat C4.4 ACERT engine:
  - Common rail fuel injection
  - Tier 4 Final/Stage IV
- Caterpillar NO<sub>x</sub> reduction system
- Fuel: Ultra Low Sulphur Diesel @ <15 ppm EPA/<10 ppm EU
- Engine oil: CJ-4
- Electric fuel pump with 4 micron filtration
- S-O-S<sup>SM</sup> port, transmission oil
- Hydrostatic transmission, 20 km/h (12.5 mph)
- Lube for life universal joints
- Forward – Neutral – Reverse on joystick
- 100% locking differentials
- Air cleaner, radial seal, dual filters
- Cooling fan, on demand
- Tires 17.5-25 12PR
- Integrated cyclone precleaner

### LOADER END

- Parallel lift, optimized Z-bar loader

### REGIONAL STANDARDS (as required)

- Back-up alarm
- Chocks, bucket tooth or edge
- Decals, roading speed
- Beacon
- Reflectors, roading
- Camera, rearview

### HYDRAULICS

- Two valve, single lever joystick
- Diagnostic pressure taps
- S-O-S port, hydraulic oil
- Variable displacement piston pump
- Cylinder damping at kickout and end stops

### ELECTRICAL

- 150 amp alternator
- Single 850 CCA maintenance free battery
- Rooding lights
- Battery disconnect switch

### FLUIDS

- Extended life coolant antifreeze, protected to -36° C (-33° F)
- Cat Advanced HYDO 10 hydraulic oil

### CHASSIS

- Front and rear fenders
- Lockable engine enclosure
- Recovery hitch
- Vandalism protection – locked service points

### OPERATOR ENVIRONMENT

- ROPS/FOPS cab, pressurised and sound suppressed
- Implement lockout
- Electro-hydraulic implement controls
- Gauges:
  - Engine coolant temperature
  - Hydraulic oil temperature
  - Fuel level
  - Speedometer
  - Digital hour meter
  - DEF level indicator
- Warning system indicators:
  - Emission malfunction
  - Air filter restriction
  - Brake charge pressure low
  - Engine malfunction
  - Park brake applied
  - Electrical system voltage flow
  - Hydraulic oil filter bypass
  - Action indicator
- Seat:
  - Fabric or vinyl
  - Adjustable height, backrest, armrest
- Heater/defroster
- Tinted front glass, laminated
- Adjustable steering column
- Rear window defrost
- Lockable storage box
- Internal 12V power source
- External 12V power source

## OPTIONAL EQUIPMENT

### POWER TRAIN

- Secondary steering
- Sound suppression, EU Prep Package
- Extreme temperature engine coolant
- High speed option 40 km/h (25 mph)
- 918M tire options:
  - 17.5-25 12PR L2
  - 17.5-R25 XHA \* L3
  - 17.5-R25 \* L2/L3 PC RM
  - 17.5-25 16PR L3, 3PC Rim
  - 17.5-25 GY L2/L3
  - 17.5-25 12PR L2, SNOW
  - Flexport™

### LOADER END

- Integrated tool carrier coupler
- Wide (ISO) coupler

### HYDRAULICS

- Three valve, single lever joystick
- Four valve, single lever joystick
- High flow, third valve

### ELECTRICAL

- Halogen lights, front and rear
- LED work lights, front and rear
- Heavy duty battery package
- Work tool wiring harness

### FLUIDS

- Biodegradable hydraulic oil

### CHASSIS

- Lockable toolbox
- Fenders, mud flaps

### OPERATOR ENVIRONMENT

- ROPS/FOPS canopy or cab
- Premium heated, air suspension seat
- Heater and air conditioner
- Feature Package: Road/Load/Road & Load. Dependent on package selection, features included are:
  - Adjustable Rimpull
  - Ride Control
  - Adjustable Ground Speed Control
  - Implement Modulation
  - Hystat Aggressiveness
  - Throttle Lock and Adjust
  - Automatic Loader lift and bucket kickouts adjustable in cab
- Cat radio (Bluetooth)
- Rear blind
- Security system
- Retractable seat belt 75 mm (3")
- Rearview camera and screen (standard in EU)
- Product Link™

For more complete information on Cat products, dealer services, and industry solutions, visit us on the web at [www.cat.com](http://www.cat.com)

© 2016 Caterpillar  
All rights reserved

Materials and specifications are subject to change without notice. Featured machines in photos may include additional equipment. See your Cat dealer for available options.

CAT, CATERPILLAR, SAFETY.CAT.COM, their respective logos, "Caterpillar Yellow" and the "Power Edge" trade dress, as well as corporate and product identity used herein, are trademarks of Caterpillar and may not be used without permission.

AEHQ7803-01 (05-2016)  
Replaces AEHQ7803  
(EU, NACD)

