



Cat[®] 910M

COMPACT WHEEL LOADER

FEATURES:

- **Cat[®] Optimized Z-bar Loader Linkage** – The Cat Optimized Z-bar Loader linkage combines the digging efficiency of a traditional Z-bar with tool carrier capabilities for great performance and versatility. With parallel lift and high tilt forces throughout the working range you can safely and confidently handle loads with precise control.
- **Work Tools** – The 910M features the Cat exclusive, Performance Series Buckets, as well as high visibility pallet forks. These tools enhance productivity and are available with either an Integrated Toolcarrier (IT) or ISO (wide) coupler style. Legacy coupler tools such as brooms, grapple buckets, multi-purpose buckets and other work tools remain compatible.
- **Hydraulics and Controls** – State of the art electro-hydraulic system provides low effort, fine control with fast cycle times. All-in-one joystick helps keep eyes on the work. Operator can adjust machine responsiveness with the push of a button, which allows the operator to set up the machine exactly the way they want it based on the application.
- **Tuned Drivetrain** – Smooth shifting and powerful acceleration is matched with modulated hydrostatic braking in the inching/braking pedal, creating a rhythm for material moving. Creeper and electronic engine speed control makes broom and snow blower work easy. Operator tunes between smooth or aggressive shifting with the push of a button.
- **Cab** – All around visibility is further enhanced with the availability of a rearview camera. The deluxe cab ensures operator comfort with a heated, air suspension seat and easy to use controls. Available features such as Implement and Hystat Aggressiveness, Ride Control, Lift and Tilt Kickouts, Engine Speed Control and Rimpull Control allow the operator to customize the machine via a soft touch keypad.
- **Serviceability** – Extended service intervals and excellent service access make daily checks quick and easy allowing you to get to work sooner.
- **Efficiently Powerful** with its high full turn tipping loads, powerful breakout forces and increased engine power the M Series delivers a balanced solution for all customer applications.
- **Standard Fuel Savings Features** such as Eco Mode, On Demand Cooling Fan, and Auto Engine Idle Shutdown make the 910M both powerful and fuel efficient.

Specifications

Engine

Engine Model	Cat C4.4 ACERT™	
Maximum Gross Power:		
Maximum Engine Speed	2,350 RPM	
SAE J1995	76 kW	102 hp
ISO 14396	74 kW	100 hp
ISO 14396 (DIN)	74 kW	101 hp
Rated Net Power:		
Rated Engine Speed	2,200 RPM	
SAE J1349	72 kW	96 hp
ISO 9249	72 kW	97 hp
ISO 9249 (DIN)	72 kW	98 hp
Displacement	4.4 L	268 in ³
Bore	105 mm	4.13 in
Stroke	127 mm	5.00 in

Engine (continued)

Maximum Gross Torque:		
SAE J1995	455 N-m	336 lbf-ft
ISO 14396	450 N-m	332 lbf-ft
Maximum Net Torque:		
SAE J1349	441 N-m	325 lbf-ft
ISO 9249	446 N-m	329 lbf-ft

- Engine meets U.S. EPA Tier 4 Final/EU Stage IV emission standards.
- Net power advertised is the power available at the flywheel plus front drive implement pump when the engine is equipped with fan, air cleaner, muffler and alternator.



910M Compact Wheel Loader

Buckets

Bucket Capacities – General Purpose	1.3-1.9 m ³	1.7-2.5 yd ³
-------------------------------------	------------------------	-------------------------

Steering

Steering Articulation Angle (each direction)	40 degrees	
Maximum Flow – Steering Pump	66 L/min	17 gal/min
Maximum Working Pressure – Steering Pump	18 500 kPa	2,683 psi
Steering Cycle Times (full left to full right):		
At 2,350 RPM: 90 RPM steering wheel speed	3.2 seconds	
Number of Steering Wheel Turns – full left to full right or full right to full left	3.75 turns	

Loader Hydraulic System

Maximum Flow – Implement Pump	122 L/min	32 gal/min
3rd Function, Maximum Flow	90 L/min	24 gal/min
4rd Function, Maximum Flow	90 L/min	24 gal/min
Maximum Working Pressure – Implement Pump	23 500 kPa	3,408 psi
Relief Pressure – Tilt Cylinder	34 000 kPa	4,931 psi
3rd Function Maximum Working Pressure	21 000 kPa	3,046 psi
4th Function Maximum Working Pressure	21 000 kPa	3,046 psi

Hydraulic Cycle Times:

Raise (ground level to maximum lift)	5.2 seconds	
Dump (at maximum reach)	1.4 seconds	
Rack Back	2.2 seconds	
Float Down (maximum lift to ground level)	3.7 seconds	
Total Cycle Time	12.5 seconds	

Service Refill Capacities

Fuel Tank	154.0 L	40.7 gal
Cooling System	21.5 L	5.7 gal
Engine Crankcase	8.8 L	2.3 gal
Axles:		
Front Center Differential	7.5 L	2.0 gal
Rear Center Differential	7.5 L	2.0 gal
Hydraulic System (including tank)	98.0 L	25.9 gal
Hydraulic Tank	55.0 L	14.5 gal
Transmission	3.4 L	0.9 gal
Diesel Exhaust Fluid (DEF) Tank	18.9 L	5.0 gal

- DEF used in Cat SCR systems must meet the requirements outlined in the International Organization for Standardization (ISO) standard 22241-1.

Transmission

Forward and Reverse:		
Low Range, Speed Range 1*	10 km/h	6.3 mph
Low Range, Speed Range 2*	20 km/h	12.5 mph
High Range	40 km/h	25 mph

*Creeper Control allows speed control from a stand still up to 10 km/h (6.3 mph). The Creeper Control will only work in Range 1.

Tires

Standard Size	15.5-25 12PR
Other Choices Include:	15.5-R25
	17.5-25 12PR
	17.5-25 12PR L2
	17.5-R25 XHA * L3
	17.5-R25 * L2/L3 PC RM
	17.5-25 16PR L3, 3PC Rim
	17.5-25 GY L2/L3
	17.5-25 12PR L2, SNOW Flexport™

- Other tire choices are available. Contact your Cat dealer for details.
- In certain applications, the loader's productive capabilities may exceed the tire's tonnes-km/h (ton-mph) capabilities.
- Caterpillar recommends that you consult a tire supplier to evaluate all conditions before selecting a tire model.

Cab

ROPS	ISO 3471:2008
FOPS	ISO 3449:2005 Level II

- Cab and Rollover Protective Structures (ROPS) are standard in North America and Europe.
- The declared dynamic operator sound pressure levels per ISO 6396:2008*, when properly installed and maintained, is 77 dB(A).
- The labelled sound power level for the CE marked configurations when measured according to the test procedure and conditions specified in 2000/14/EC is 103 dB(A).

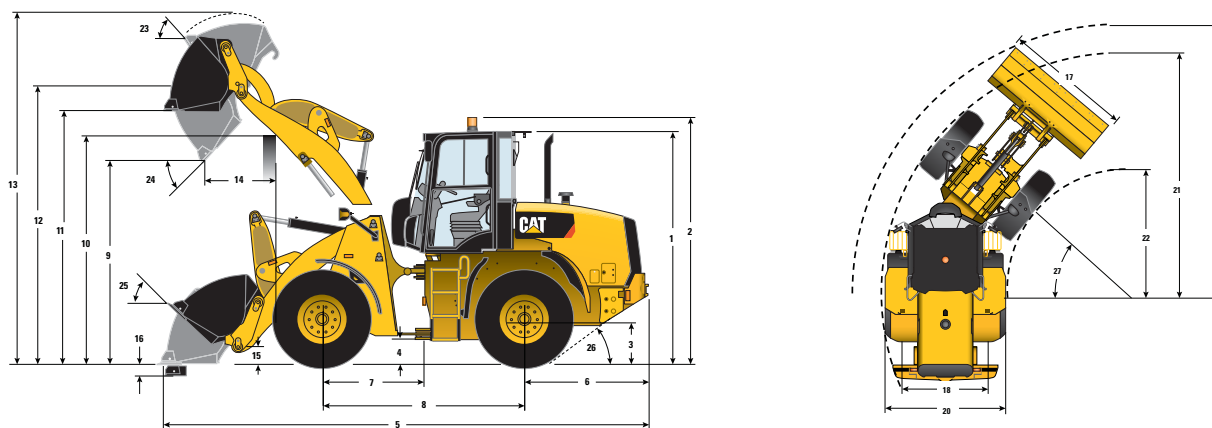
*The measurements were conducted with the cab doors and windows closed.

Axles

Front	Fixed
	Locking differential (standard)
Rear	Oscillating ±11 degrees
	Locking differential (Standard)

910M Compact Wheel Loader

Dimensions and Operating Specifications (All dimensions are approximate. Dimensions vary with bucket and tire choice.)

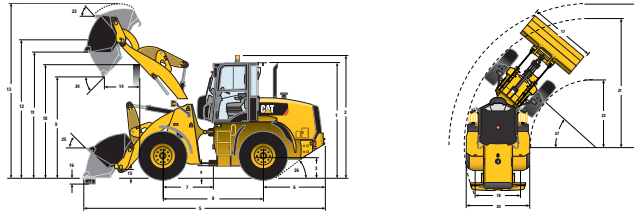


	Standard Lift – IT		Standard Lift – ISO		Standard Lift – PO	
*Vary with bucket. **Vary with tire.						
** 1 Height: Ground to Cab	3020 mm	9'10"	3020 mm	9'10"	3020 mm	9'10"
** 2 Height: Ground to Beacon	3210 mm	10'6"	3210 mm	10'6"	3210 mm	10'6"
** 3 Height: Ground Axle Center	600 mm	1'11"	600 mm	1'11"	600 mm	1'11"
** 4 Height: Ground Clearance	348 mm	1'1"	348 mm	1'1"	348 mm	1'1"
* 5 Length: Overall	6293 mm	20'7"	6350 mm	20'10"	6226 mm	20'5"
6 Length: Rear Axle to Bumper	1590 mm	5'2"	1590 mm	5'2"	1590 mm	5'2"
7 Length: Hitch to Front Axle	1300 mm	4'3"	1300 mm	4'3"	1300 mm	4'3"
8 Length: Wheel Base	2600 mm	8'6"	2600 mm	8'6"	2600 mm	8'6"
* 9 Clearance: Bucket at 45 Degrees	2809 mm	9'2"	2772 mm	9'1"	2846 mm	9'4"
** 10 Clearance: Load Over Height	3284 mm	10'9"	3284 mm	10'9"	3284 mm	10'9"
** 11 Clearance: Level Bucket	3418 mm	11'2"	3418 mm	11'2"	3419 mm	11'2"
** 12 Height: Bucket Pin	3673 mm	12'0"	3673 mm	12'0"	3673 mm	12'0"
** 13 Height: Overall	4563 mm	14'11"	4599 mm	15'1"	4534 mm	14'10"
* 14 Reach: Bucket at 45 Degrees	820 mm	2'8"	863 mm	2'9"	759 mm	2'5"
15 Carry Height: Bucket Pin	319 mm	1'0"	317 mm	1'0"	319 mm	1'0"
** 16 Dig Depth	117 mm	4.5"	117 mm	4.5"	116 mm	4.5"
17 Width: Bucket	2401 mm	7'10"	2401 mm	7'10"	2401 mm	7'10"
18 Width: Tread Center	1800 mm	5'10"	1800 mm	5'10"	1800 mm	5'10"
19 Turning Radius: Over Bucket	5199 mm	17'0"	5216 mm	17'1"	5180 mm	16'11"
20 Width: Over Tires	2259 mm	7'4"	2259 mm	7'4"	2259 mm	7'4"
21 Turning Radius: Outside of Tires	4716 mm	15'5"	4716 mm	15'5"	4716 mm	15'5"
22 Turning Radius: Inside of Tires	2446 mm	8'0"	2446 mm	8'0"	2446 mm	8'0"
23 Rack Angle at Full Lift	57 degrees		57 degrees		57 degrees	
24 Dump Angle at Full Lift	48 degrees		48 degrees		47 degrees	
25 Rack Angle at Carry	42 degrees		43 degrees		42 degrees	
26 Departure Angle	33 degrees		33 degrees		33 degrees	
27 Articulation Angle	40 degrees		40 degrees		40 degrees	
*Tipping Load – Straight (ISO 14397-1)	5991 kg	13,208 lb	5867 kg	12,935 lb	6066 kg	13,373 lb
*Tipping Load – Full Turn (ISO 14397-1)	5062 kg	11,160 lb	4952 kg	10,917 lb	5152 kg	11,358 lb
*Breakout Force	6458 kg	14,237 lb	6298 kg	13,885 lb	7339 kg	16,180 lb
*Operating Weight	8090 kg	17,835 lb	8116 kg	17,893 lb	7734 kg	17,051 lb

Dimensions listed are for a machine configured with general purpose buckets, bolt-on cutting edges, 80 kg (176 lb) operator and 15.5 R25 (L2) tires.

910M Compact Wheel Loader

Dimensions and Operating Specifications (All dimensions are approximate. Dimensions vary with bucket and tire choice.)



	High Lift – IT		High Lift – ISO		High Lift – PO	
*Vary with bucket. **Vary with tire.						
** 1 Height: Ground to Cab	3020 mm	9'10"	3020 mm	9'10"	3020 mm	9'10"
** 2 Height: Ground to Beacon	3210 mm	10'6"	3210 mm	10'6"	3210 mm	10'6"
** 3 Height: Ground Axle Center	600 mm	1'11"	600 mm	1'11"	600 mm	1'11"
** 4 Height: Ground Clearance	348 mm	1'1"	348 mm	1'1"	348 mm	1'1"
* 5 Length: Overall	6825 mm	22'4"	6882 mm	22'6"	6758 mm	22'2"
6 Length: Rear Axle to Bumper	1590 mm	5'2"	1590 mm	5'2"	1590 mm	5'2"
7 Length: Hitch to Front Axle	1300 mm	4'3"	1300 mm	4'3"	1300 mm	4'3"
8 Length: Wheel Base	2600 mm	8'6"	2600 mm	8'6"	2600 mm	8'6"
* 9 Clearance: Bucket at 45 Degrees	3176 mm	10'5"	3140 mm	10'3"	3219 mm	10'6"
** 10 Clearance: Load Over Height	3397 mm	11'1"	3397 mm	11'1"	3397 mm	11'1"
** 11 Clearance: Level Bucket	3774 mm	12'4"	3774 mm	12'4"	3775 mm	12'4"
** 12 Height: Bucket Pin	4030 mm	13'2"	4030 mm	13'2"	4030 mm	13'2"
** 13 Height: Overall	4920 mm	16'1"	4955 mm	16'3"	4891 mm	16'0"
* 14 Reach: Bucket at 45 Degrees	1054 mm	3'5"	1100 mm	3'7"	1004 mm	3'3"
15 Carry Height: Bucket Pin	480 mm	1'6"	448 mm	1'5"	480 mm	1'6"
** 16 Dig Depth	295 mm	11.6"	295 mm	11.6"	294 mm	11.5"
17 Width: Bucket	2401 mm	7'10"	2401 mm	7'10"	2401 mm	7'10"
18 Width: Tread Center	1800 mm	5'10"	1800 mm	5'10"	1800 mm	5'10"
19 Turning Radius: Over Bucket	5440 mm	17'10"	5452 mm	17'10"	5419 mm	17'9"
20 Width: Over Tires	2259 mm	7'4"	2259 mm	7'4"	2259 mm	7'4"
21 Turning Radius: Outside of Tires	4716 mm	15'5"	4716 mm	15'5"	4716 mm	15'5"
22 Turning Radius: Inside of Tires	2446 mm	8'0"	2446 mm	8'0"	2446 mm	8'0"
23 Rack Angle at Full Lift	59 degrees		60 degrees		59 degrees	
24 Dump Angle at Full Lift	44 degrees		44 degrees		43 degrees	
25 Rack Angle at Carry	50 degrees		49 degrees		50 degrees	
26 Departure Angle	33 degrees		33 degrees		33 degrees	
27 Articulation Angle	40 degrees		40 degrees		40 degrees	
*Tipping Load – Straight (ISO 14397-1)	5625 kg	12,401 lb	5524 kg	12,178 lb	5705 kg	12,577 lb
*Tipping Load – Full Turn (ISO 14397-1)	4709 kg	10,382 lb	4619 kg	10,183 lb	4802 kg	10,587 lb
*Breakout Force	6514 kg	14,361 lb	6351 kg	14,002 lb	7404 kg	16,323 lb
*Operating Weight	8654 kg	19,079 lb	8680 kg	19,137 lb	8299 kg	18,296 lb

Dimensions listed are for a machine configured with general purpose buckets, bolt-on cutting edges, 80 kg (176 lb) operator and 15.5 R25 (L2) tires.

For more complete information on Cat products, dealer services, and industry solutions, visit us on the web at www.cat.com

AEHQ7822 (05-2016)
(EU, NACD)

© 2016 Caterpillar
All rights reserved

Materials and specifications are subject to change without notice. Featured machines in photos may include additional equipment. See your Cat dealer for available options.

CAT, CATERPILLAR, SAFETY.CAT.COM, their respective logos, "Caterpillar Yellow" and the "Power Edge" trade dress, as well as corporate and product identity used herein, are trademarks of Caterpillar and may not be used without permission.

